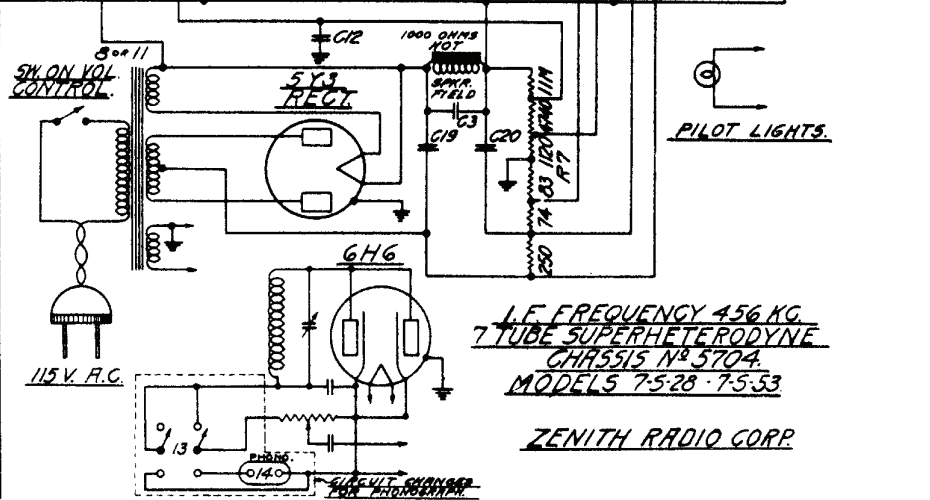


DWG. NO.	PART NO.	DESCRIPTION
C1	22-243	.01
C2	22-410	.003
C3	22-170	.1
C4	22-289	.00005
C5	22-409	VARIABLE
C6	22-127	.000025
C7	22-212	.05
C8	22-411	.0023
C9	22-345	.0011
C10	22-205	200-550
C11	22-82	.01
C12	22-224	.1
C13	22-188	.02
C14	22-420	10 MFD
C15	22-162	.0001
C16	22-435	.02
C17	22-130	.01
C18	22-417	.1
C19	22-416	8 MFD
C20	22-416	2 MFD
C21	22-408	2-35 MMFD.
C22	22-250	.05

DWG. NO.	PART NO.	DESCRIPTION
R1	63-273	99M OHMS
R2	63-373	11M
R3	63-355	19M
R4	63-280	45M
R5	63-457	400M VOL CONTROL
R6	63-293	990M OHMS
R7	63-453	CANDOMM
R8	63-466	990 OHMS
R9	63-258	490M
R10	63-450	50M TONE CONTROL

1	5-3697	ANT COIL ASSEM.
2	20-82	ANT CHOK (1MM.)
3	5-3698	DET COIL ASSEM.
4	35-291	1ST I.F. TRANS.
5	35-292	2ND I.F. TRANS.
6	53-3699	OSC COIL ASSEM.
7	49-117	1/2 SPKR. MOD. 75-28
8	35-289	POWER TRANS. 60V
9	20-119	P.F. PLATE CHOK ASSEM.
10	35-290	BAND SELECT SWITCH
11	35-290	POWER TRANS. 25V
12	49-122	1/2 SPKR. MOD. 75-53
13	65-39	PHONO SWITCH
14	44-7	TRGK.



L.F. FREQUENCY 456 KC.
7 TUBE SUPERHETERODYNE
CHASSIS NO. 5704.
MODELS 7-5-28 · 7-5-53
ZENITH RADIO CORP.